



Press play for video content

THE CLIENT

Contec – dedicated to safely developing and manufacturing innovative cleaning products for use in critical applications. Contec are committed to empowering their talented associates who are excited by the challenge to provide total customer satisfaction to world-class manufacturers, healthcare providers and professional cleaners.



Consumables Manufacturing 21+/-3C – 40+/-20% RH 775m²

THE BRIEF

The Guardtech Group were engaged by the client to take on the installation of the cleanroom envelope after the previous contractor assigned to the project went into administration. An initial design had been completed by the former supplier and approved by Contec, and so this was mostly continued by our turnkey brand Cleanroom Solutions to minimise delays – however, improvements and efficiencies were included in our update to ensure compliance and provide best value for money across the remainder of the scheme.



“A fine example of our amazing flexibility...”

Guardtech Group Senior Project Manager Dan Baxendale said: “I’d like to pay tribute to our incredibly hard-working Installation Team for their dedication on this testing project.

“We worked so well in demonstrating our malleability and flexibility to take on a build that had already been started by another contractor who, sadly, went into administration.

“Taking a previous design and reworking it to improve efficiencies and operational practicalities pushed our Design and Install Teams all the way, but the finished result is a fantastic cleanroom facility which I’m sure will empower an amazing client to continue their upward trajectory in their field.”

Dan Baxendale
Guardtech Group
Senior Project Manager





Press play for video content



GT Shell official panel system partner:



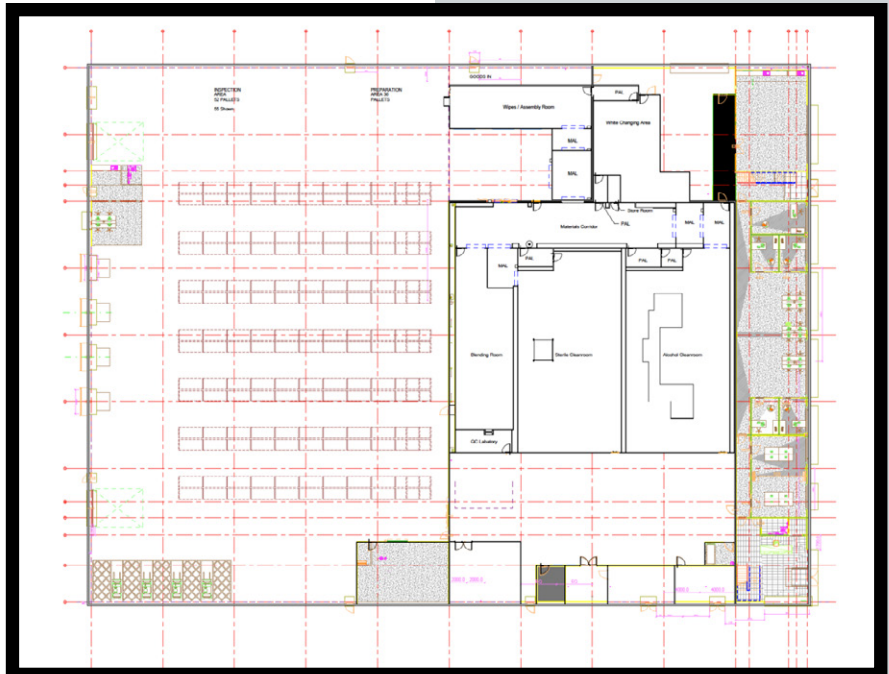
Partner

THE TECH SPECS

A controlled environment designed, installed, cleaned and commissioned by Guardtech built to the following specification:

◆ **Structural:** GT Shell Pro and Max wall panels with Quadcore insulation and 120-micron thickness powder-coated steel face, GT Lid Pro ceiling panels suspended from the steel frame above with threaded rod to top hat support sections, GT Lid Max die-cast nodal ceiling grid & tiles system over Grade A zones.

10 x GT Access Pro fully flush single doors with in-built concealed electro-magnetic interlocks where appropriate & traffic light indicators, 7 x fully flush double glazed window units fully integrated into the panel core and face, silicon sealed between glass edge and panel aperture, GT Rise Pro rapid rise doors, GT Deck Plus 2mm vinyl flooring covered up the wall 100mm to underside of panel face for flush connection – finished with silicon seal, steel support frame, GT Strip Max PVC strip curtain.



◆ **Electrical:** GT Lux Pro LED luminaires, GT Lux Fire ATEX-rated LED luminaires, flush integrated service channels and surface-mounted trunking for 13amp and RJ45 data sockets (including ATEX rated), PLC base controls system with mechanical control panels (MCPs).

◆ **Mechanical:** GT Flow Lite H14 HEPA terminal filters, GT Air Max bespoke Air Handling Units (AHUs) for HVAC – chilled water system incorporating a central 500Kw two circuit air-cooled chiller connecting through buffer tank, pumps and pipework to

Continued on next page



each of the three AHUs, each of the cooling coils features motorised 3-port valve regulating flow to maintain desired room conditions, Free Cooling Unit (FCU), Humidifiers and Trim Heaters, Heat Recovery Units.

◆ Furniture & Equipment:

Passive grade 316 Stainless Steel Transfer Hatch from Blend Room to QC Lab with mechanical interlocking doors, Passive grade 316 Stainless Steel Transfer Hatch between Pre-Pack to Warehouse with mechanical interlocking doors.

THE CHALLENGES

Rescue mission: Regrettably, the original cleanroom contractor that was appointed to carry out this installation went into administration midway through the build. As a result, the Guardtech Group's heritage large-scale turnkey construction company Cleanroom Solutions were appointed by the client to continue those aspects of the build where the installation had been started. Because this was a complex GMP installation, this also meant the team were required to signifi-

cantly redevelop and re-design other critical areas in an effort to improve efficiencies and ensure the overall project was aligned with our usual Guardtech Group standards. The Design, Project and Installation Teams demonstrated a great deal of experience, expertise and skill to pull off this mammoth task, working fantastically well across all the different departments of the business to ensure every aspect of the project that needed updating, consolidating and improving was done so in a timely and effective manner.

Contractor collaboration: One of the key aspects of the installation that helped to bring such a complex and fluid project together was the excellent communication the Cleanroom Solutions team developed with the various contractors involved – particularly the positive working relationship that was fashioned with the new electrical contractors, EnergyTech.

But that same willingness to be flexible, malleable and encourage open dialogue stretched across the multiple contractors involved in this installation, ensuring relatively a smooth process overall. A

particularly large slice of praise must be handed out to our highly experienced Installation Manager Wayne Smith and his right-hand man, Site Manager Besjan Musaraj.

Between them, they worked diligently to ensure everything about the project was first-rate, from applying and enacting CDM and Health & Safety regulations to the letter, co-ordinating multiple contractors simultaneously, expertly managing our own Installation Team and ensuring the Guardtech Group's highest standards of construction were applied to each and every aspect of the project that we worked on.

Top drawer: This installation featured our elite GT Lid Max die-cast nodal ceiling grid & tiles system over the facility's Grade A filling/manufacturing zone.

This high-performance walk-on ceiling system not only looked fantastic, but it had to be expertly trimmed by our Installation Engineers to suit the client's machine layouts for laminar flow. The team showed all their skill and experience in re-developing the system to match the client's layout for maximum operational efficiency and aesthetics.

Continued on next page

DISINFECTANT MANUFACTURING



Press play for video content

Sprinkle some magic: Our highly experienced Mechanical Services Co-ordinator Jim Chalaby played a major role in bringing this project together across various aspects of the installation – this included working around an extremely complicated sprinkler system over three levels. The level of detail involved in the CAD co-ordination for the newly worked system was incredible – and is a great example of the complexity that the Cleanroom Solutions are now able to undertake thanks to a growing team of operatives with many years under their belts at a high level of cleanroom construction provision.

Steely determination: Further to the previous example, this project required starting from essentially ground zero when it came to the Mechanical, Electrical and Plumbing (MEP) services and steelwork. Chalaby, working closely with Mechanical Services Manager Mick Pybus, another hugely experienced and highly skilled operative, re-co-ordinated all the MEP services – including those for which sub-contractors were involved.

Pybus applied all of his experience when it came to the pipework installed



in the project – pipework that had been costed before our involvement. He ensured that everything met the highest possible standards in line with our usual Guardtech Group expectations.

Chilling out: Another significant intervention from Pybus came in regards to chilled water systems management – which was a major aspect of this project, given the

client's process was centred around manufacturing disinfectants and other related products. Despite being brought on to the project later in the overall timeline, Pybus showed a level of understanding, knowledge, experience and management skills to guide the various contractors involved to ensure a smooth, steady and efficient outcome, including some critical recommendations of supply partners to guarantee the result we strived for.

DISINFECTANT MANUFACTURING

Contact Us

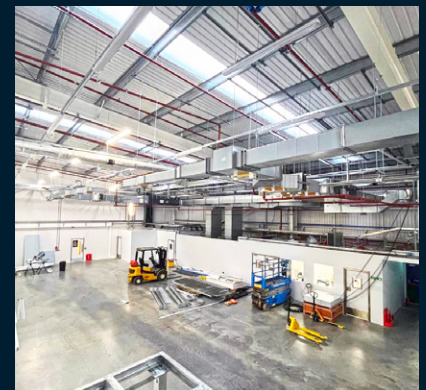


Guardian House
Unit 1A Homefield Road,
Haverhill, CB9 8QP

0330 113 0303

sales@guardtech.com

www.guardtechgroup.com



THE RESULT

Guardtech Group Senior Project Manager Dan Baxendale said: "I'd like to pay tribute to our incredibly hard-working Installation Team for their dedication on this testing project.

"We worked so well in demonstrating our malleability and flexibility to take on a build that had already been

started by another contractor who, sadly, went into administration.

"Taking a previous design and reworking it to improve efficiencies and operational practicalities pushed our Design and Install Teams all the way, but the finished result is a fantastic cleanroom facility which I'm sure will empower an amazing client to continue their upward trajectory in their field."

