



 Press play for video content



THE CLIENT

GKN Aerospace – innovators whose technologies have inspired and industrialised their industry, combining engineering excellence and technology leadership. All major aircraft and engine manufacturers rely on the client’s advanced technologies – their aerostructures, engine systems and special products improve the performance of more than 100,000 flights every day.



Aerospace



21+/-2 C
50-60% RH



1650m²



THE BRIEF

Following an on-site consultation at GKN Aerospace’s East Cowes facility – a 1600sqm ISO8 cleanroom build by Guardtech brand Cleanroom Solutions – Guardware Cleanroom Consultant Steve Bawa worked with a trusted stainless steel supplier to develop a bespoke modular stainless steel workbench system to support the expansion of the client’s Aerospace production operations. The client needed a flexible solution to avoid product ‘overhang’ on their benches.

“A solution that delivered on quality and robustness...”

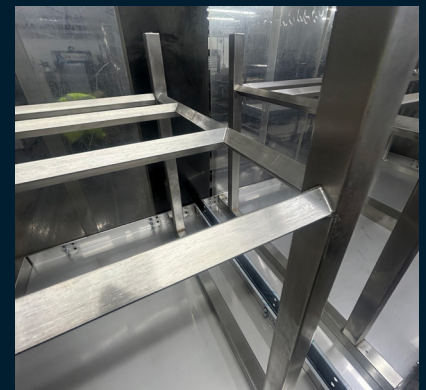
Guardware Cleanroom Consultant Steve Bawa said: “Thank you to everyone involved in this project, helping us to deliver a bespoke Guardware furniture solution for such a distinguished client. “GKN required a solution to suit their working practices – and I’m delighted that we were able to think outside the box to help provide a bespoke modular workbench that delivered on quality, robustness and moveability. “We look forward to offering this solution and others like it to many more elite customers in the future.”

Steve Bawa, Guardware Cleanroom Consultant





 Guardian House
 Unit 1A Homefield Road,
 Haverhill, CB9 8QP
 0330 113 0303
 sales@guardtech.com
 www.guardtechgroup.com



THE CHALLENGE

Aerospace manufacturing environments typically demand:

- Dimensional accuracy
- Structural rigidity
- Contamination control
- Production-line flexibility
- Long-term durability

The client required a modular stainless steel bench solution that could meet fixed dimensional constraints while allowing for future expansion without replacing entire workstations. Traditional fixed benches would not provide the scalability required for phased production growth.

1500mm (W) x 900mm (H)

- 40x40 box section legs
- 25x25 bracing with 45° reinforcement
- Staggered bolt pattern
- Integrated captive nut connection system
- Zinc locking castors for controlled mobility

- Triple bar undershelf (diamond style) for secondary production storage/improved anti-particulate gathering performance.

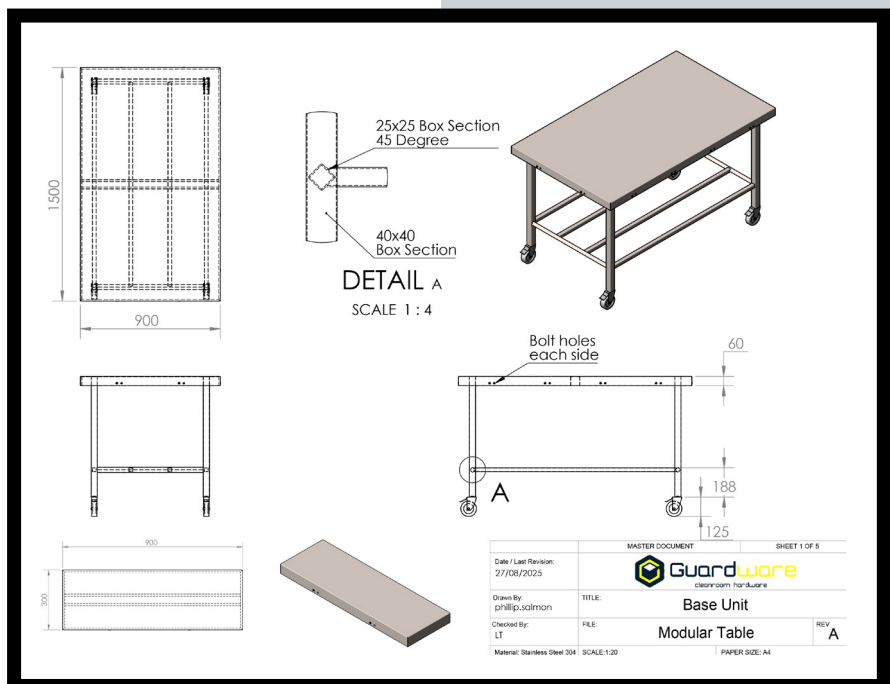
The rigid box-section frame ensures structural stability suitable for Aerospace assembly applications where vibration and load consistency are critical.

THE SOLUTION

The bespoke modular bench system is fabricated from grade 304 stainless steel, offering durability, corrosion resistance and suitability for clean manufacturing environments.

Each base unit features:

- Sizing: 900mm (L) x





 Guardian House
 Unit 1A Homefield Road,
 Haverhill, CB9 8QP
 0330 113 0303
 sales@guardtech.com
 www.guardtechgroup.com



 Press play for video content

Modular Expansion Capability

The client needed a solution that would avoid overhang of the parts they were working on and ensure precise dimensional conformity, leading to Guardware's bespoke bolt-on extension innovation.

Long-Edge Add-Ons (1500mm Width)

- 100mm extension
- 200mm extension
- 300mm extension

Short-Edge Add-Ons (900mm Width)

- 100mm extension
- 200mm extension
- 300mm extension

Pre-drilled bolt holes and captive nut integration allow secure attachment without compromising frame rigidity.

This modularity allows:

- Precision length adjustment
- Non-standard dimension achievement
 - Rapid reconfiguration of production lines
 - Reduced capital expenditure through phased incremental expansion

THE IMPLEMENTATION

An initial test-run order of four benches was put in place to validate performance prior to full-scale rollout. This proved successful and, following two audits from the Guardware team to ensure quality, consistency and performance of the product, a series of well-co-ordinated deliveries took place, taking into account the client's need for flexibility and high security provision.

THE BENEFITS

Quality Control Improvement

The elimination of ply overhang reduces dimensional non-conformance and prevents potential quality failings in precision assembly operations.

Scalable Production Infrastructure

As production lines expand or reconfigure, additional modules can be installed without replacing entire benches.

Structural Integrity

Reinforced box-section construction and secure bolt integration provide rigidity suited to Aerospace-grade tolerances.

Storage Integration

The triple bar undershelf supports secondary production line storage, improving workflow efficiency.

Organisation-Wide Standardisation

The system establishes a repeatable, modular framework capable of deployment across multiple departments and future phases.

THE RESULT

Guardware's bespoke modular bench system provided GKN Aerospace with:

- A future-proof workstation solution
- Flexible dimensional control
- Improved production-line adaptability
- Enhanced quality assurance
- A scalable platform for long-term operational growth